

WASHINGTON TOWNSHIP

BERKS COUNTY

ZONING MAP

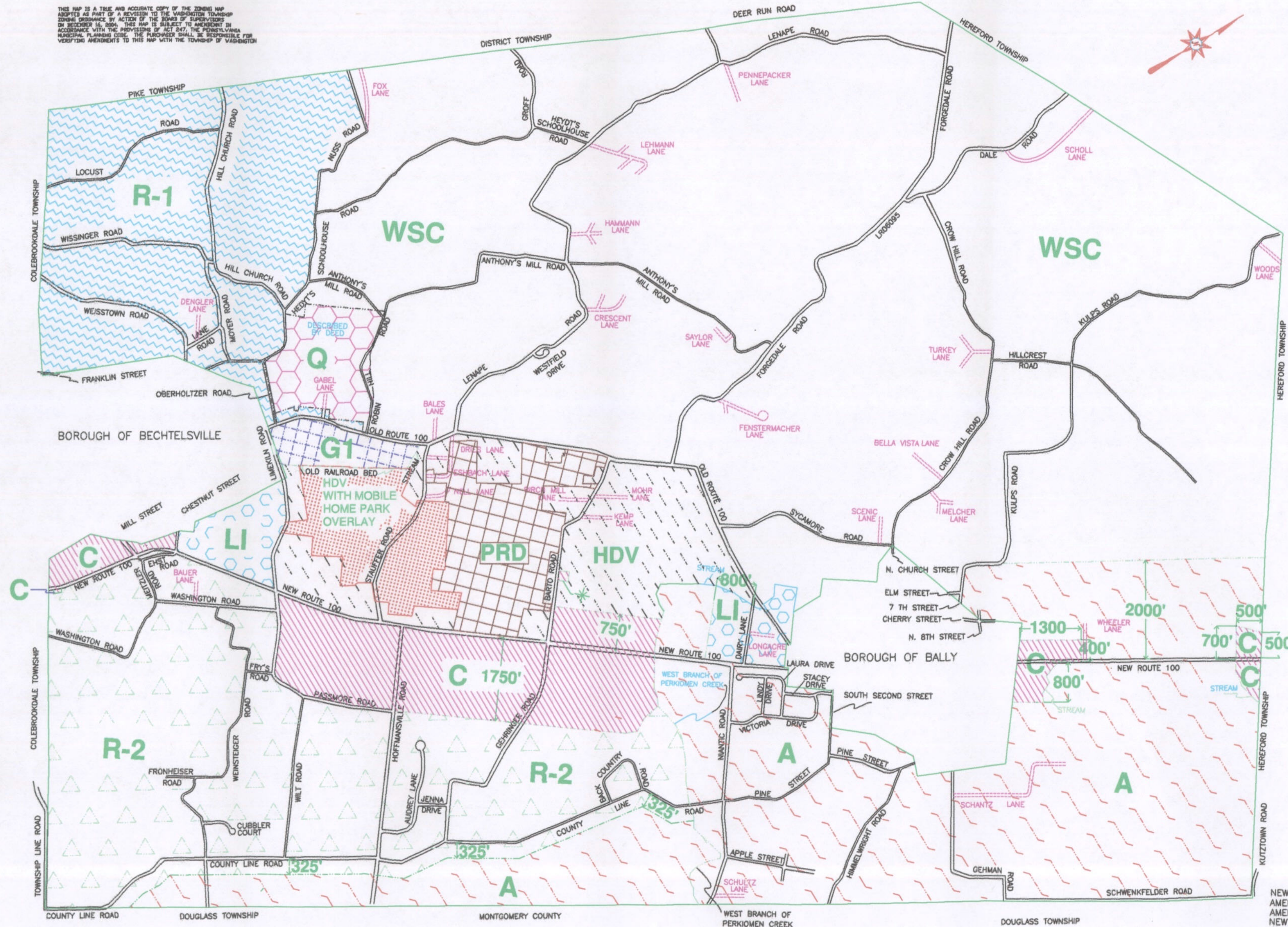
LEGEND

SYMBOL	ZONING DISTRICT
	A AGRICULTURAL
	WSC WATERSHED CONSERVATION
	R-1 RURAL RESIDENTIAL
	R-2 SUBURBAN RESIDENTIAL
	HDV HIGH DENSITY RESIDENTIAL
	C COMMERCIAL
	LI LIGHT INDUSTRIAL
	GI GENERAL INDUSTRIAL
	Q QUARRY
	HDV WITH MOBILE HOME OVERLAY
	PRD PLANNED RESIDENTIAL DEVELOPMENT

ROAD LEGEND

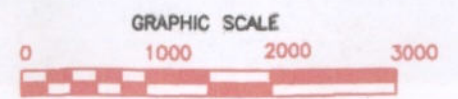
	PRIVATE LANES
	PUBLIC ROADS

THIS MAP IS A TRUE AND ACCURATE COPY OF THE ZONING MAP ADOPTED AS PART OF A REVISION TO THE WASHINGTON TOWNSHIP ZONING ORDINANCE BY ACTION OF THE BOARD OF SUPERVISORS ON DECEMBER 16, 2004. THIS MAP IS SUBJECT TO AMENDMENT IN ACCORDANCE WITH THE PROVISIONS OF ACT 247, THE PENNSYLVANIA MUNICIPAL PLANNING CODE. THE ARCHIVER SHALL BE RESPONSIBLE FOR VERIFYING AMENDMENTS TO THIS MAP WITH THE TOWNSHIP OF WASHINGTON.



* PIN 539904608996
 PRD PLANNED RESIDENTIAL DEVELOPMENT DISTRICT CONSISTS OF
 PIN 539904604236
 PIN 539903415830
 PIN 539806398754
 PIN 539806397852
 PIN 539903407395
 PIN 539806396706
 PIN 539903308573
 PIN 539903417413
 PIN 539802588919
 PIN 539903405822
 PIN 539903418927
 PIN 539903306391
 PIN 539904521580

HDV WITH MOBILE HOME OVERLAY DISTRICT CONSISTS OF
 PIN 539802580383
 PIN 539806481029
 PIN 539806371688



NEW HDV WITH MOBILE HOME OVERLAY DISTRICT 09/28/2000
 AMENDED AGRICULTURAL DISTRICT 01/10/2002
 AMENDED WSC DISTRICT 09/24/2003
 NEW PRD PLANNED RESIDENTIAL DEVELOPMENT DISTRICT 9/23/2004
 AMENDED LI LIGHT INDUSTRIAL DISTRICT 12/16/2004